



United States Department of the Interior

BUREAU OF INDIAN AFFAIRS
Lower Brule Agency
190 Oyate Circle
Lower Brule, South Dakota 57548
Office – (605) 473-5900
Fax – (605) 473-5016

IN REPLY REFER TO
Real Prop. Mgmt.
A15

November 6, 2015

Kevin Wright, Vice Chairman
Lower Brule Sioux Tribe
187 Oyate Circle
Lower Brule, SD 57548

Dear Mr. Wright:

On November 3, 2015, the Lower Brule Agency received your request for “*a map of the Gilman Homestead Purchase*”. A GIS map was released to you by the Agency without proper correspondence and without a statement on the map that cites: “*The creation of the maps is intended to provide location only. These lines are not based on a Cadastral Survey, they are derived from GIS databases*”. A Cadastral Map, as defined by Barron’s Dictionary of Real Estate Terms is: “A legal map for recording ownership of property. The map describes boundaries and ownership”.

As you are aware, the Title Status of Gilman Unit is in FEE status. Consequently, the United States does not hold title to the Gilman Unit land on behalf of the tribe. To obtain the proper coordinates of the Gilman Unit, you will need to contact the Lyman County Register of Deeds.

If you have any questions please contact the Lower Brule Realty Office at (605) 473-5904.

Sincerely,

James R. Two Bulls
Superintendent

✓ Cc: Lower Brule Tribal Council, 187 Oyate Circle, Lower Brule, SD 57548

Michael B. Landreau
Michael B. Landreau
Chairman



Tribal Administration
187 Oyate Circle
Lower Brule, SD 57548
Phone: (605) 473-5561
Fax: (605) 473-5554

11-3-15

To: BIA

From: Lower Brule Sioux Tribe

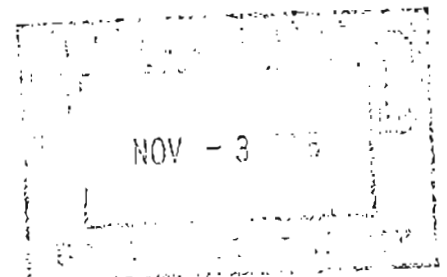
The Tribe, is at this time Requesting a map of the Gilman Homestead Purchase. WHERE THE HOUSE SITS in particular!

Thank you,

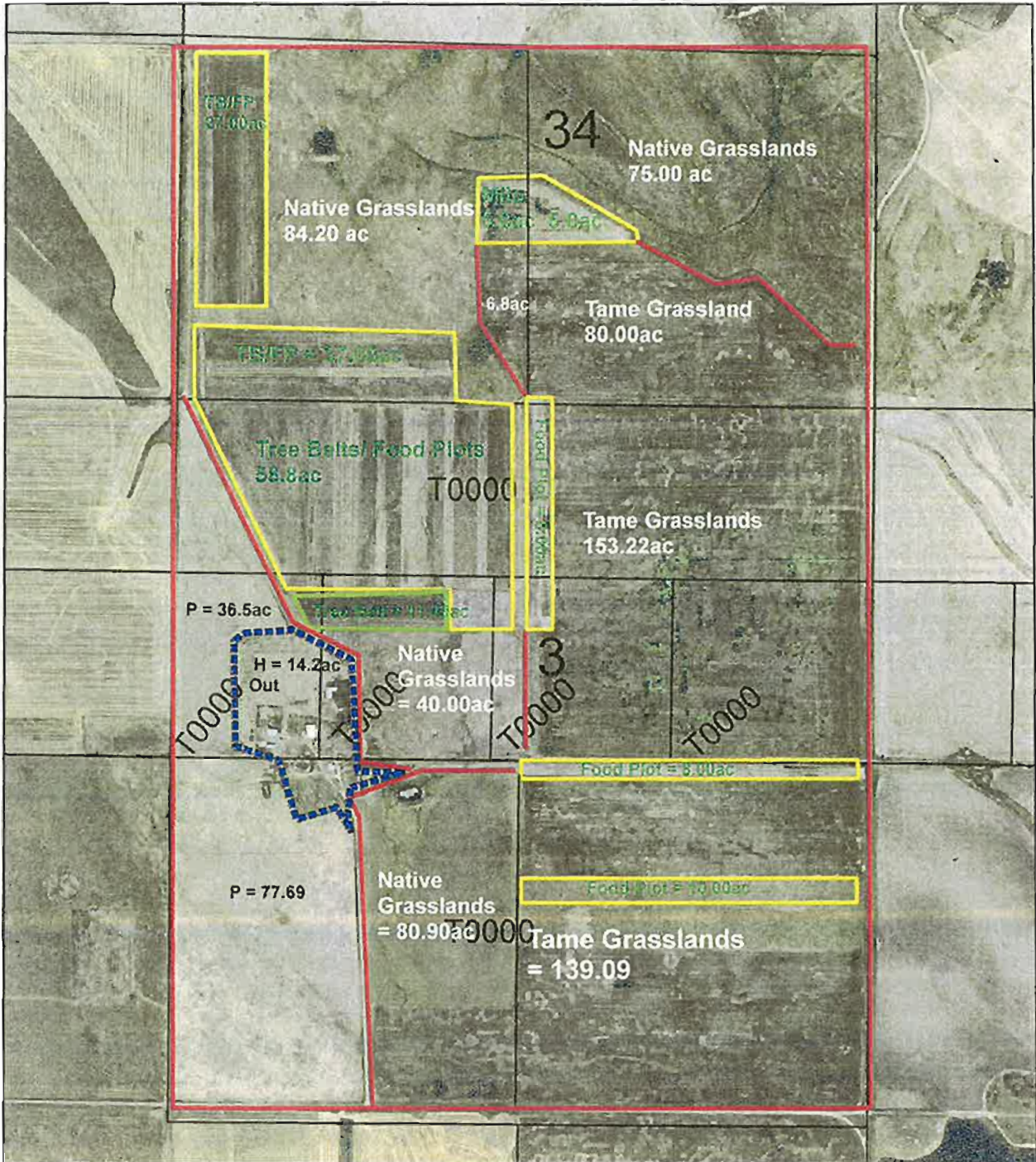
Vice-Chairman

Kevin Wright

Kevin Wright



**L.B. Wildlife Dept.
Lease # 122-FE1-1021
Gilman Purchase**



SW4 less 2.31ac in homesite; NW4 less 11.89ac in homesite; NE4; SE4; of Sec. 3, T106N, R76W, 5TH P.M., Lyman Co., SD, containing 623.69 acres.

S2 of Sec. 34, T107N, R76W, 5TH P.M., Lyman Co., SD, containing 320.00 acres.

Date: 12/14/11
Prepared by: PBE/AWL

